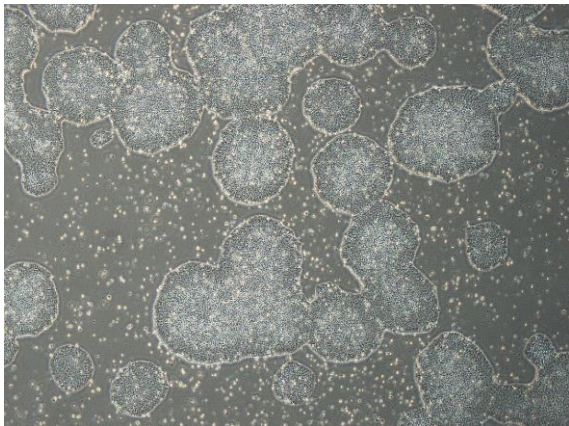
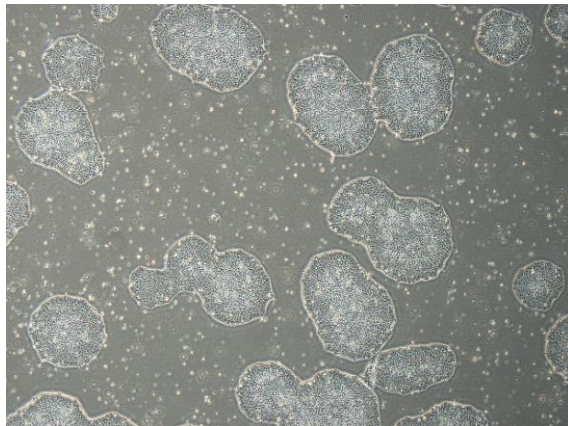


## 【 CiRA-j-1222 】 Morphology of iPSC colonies

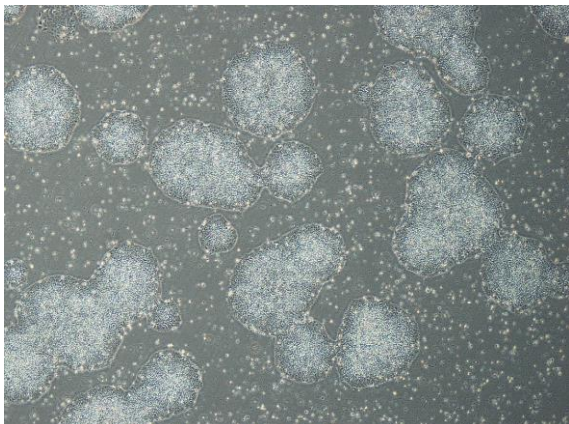
CiRA-j-1222-A: passage-3



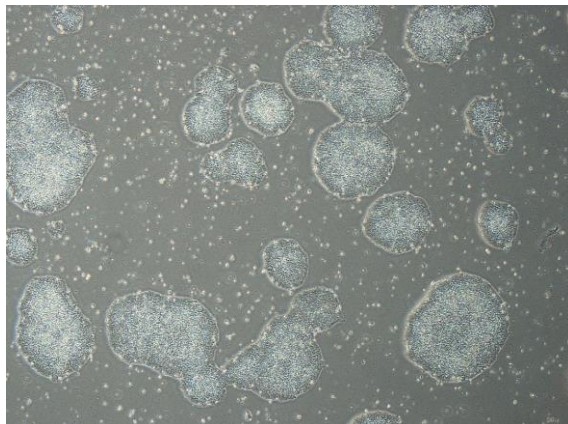
CiRA-j-1222-B: passage-3



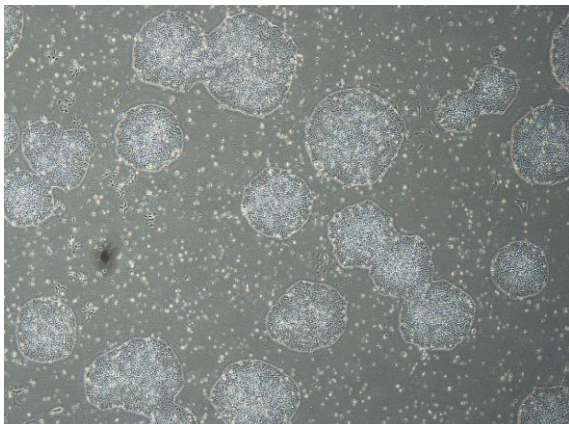
CiRA-j-1222-C: passage-3



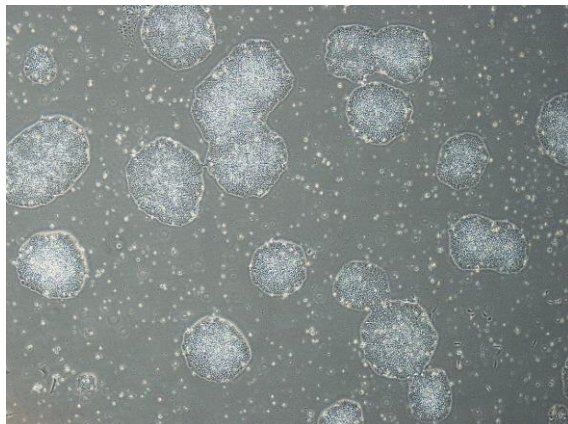
CiRA-j-1222-D: passage-3



CiRA-j-1222-E: passage-3



CiRA-j-1222-F: passage-3



( All images were captured at 4x magnification )